

Aperio ImageScope Instruction Guide

This instruction guide shows the application interface and its main components. It also illustrates how to view multiple images (slides), zoom in/out and pan.

Get familiar with the interface

Familiarize yourself with the application interface. The areas highlighted with red are the main components.

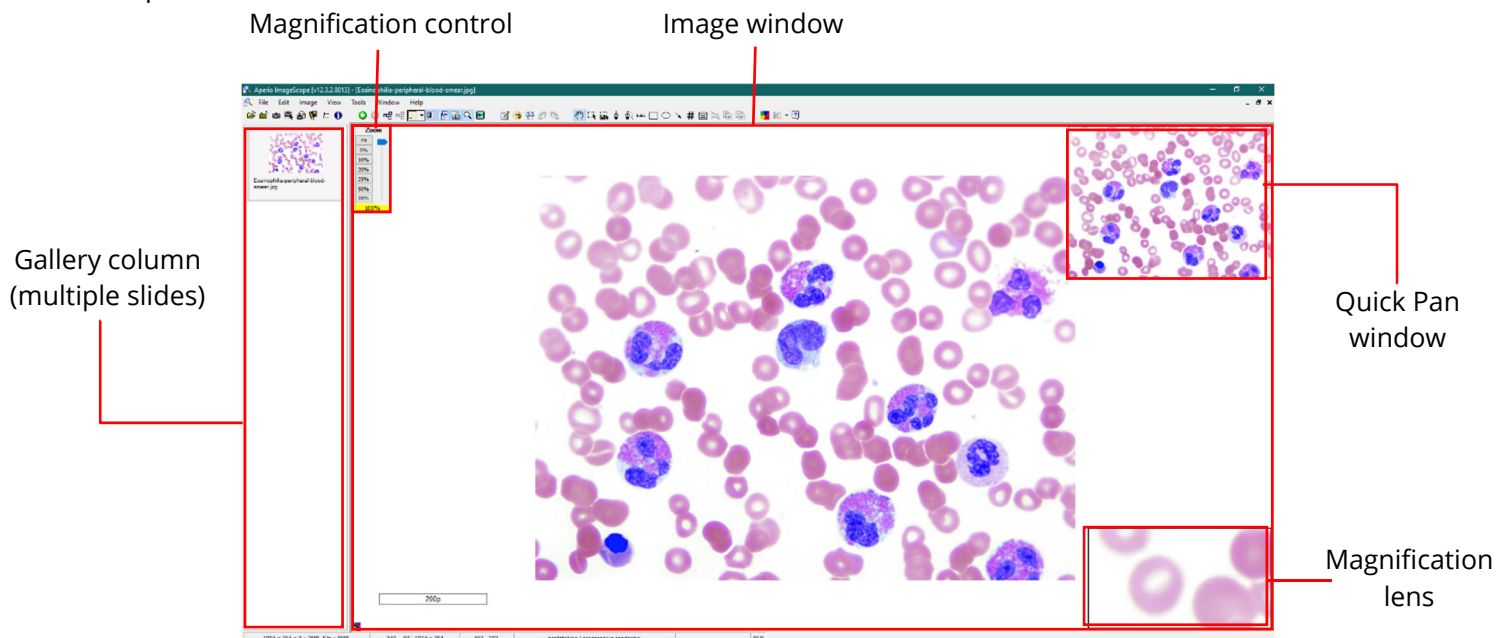


Figure 1: A screenshot of Aperio ImageScope application interface.

Changing images (slides)

You may wish to view the different images (slides) opened in the viewer (if multiple images are loaded) by following the step below.

- Click on the desired image thumbnail shown in the **Gallery** column on the side of the image.

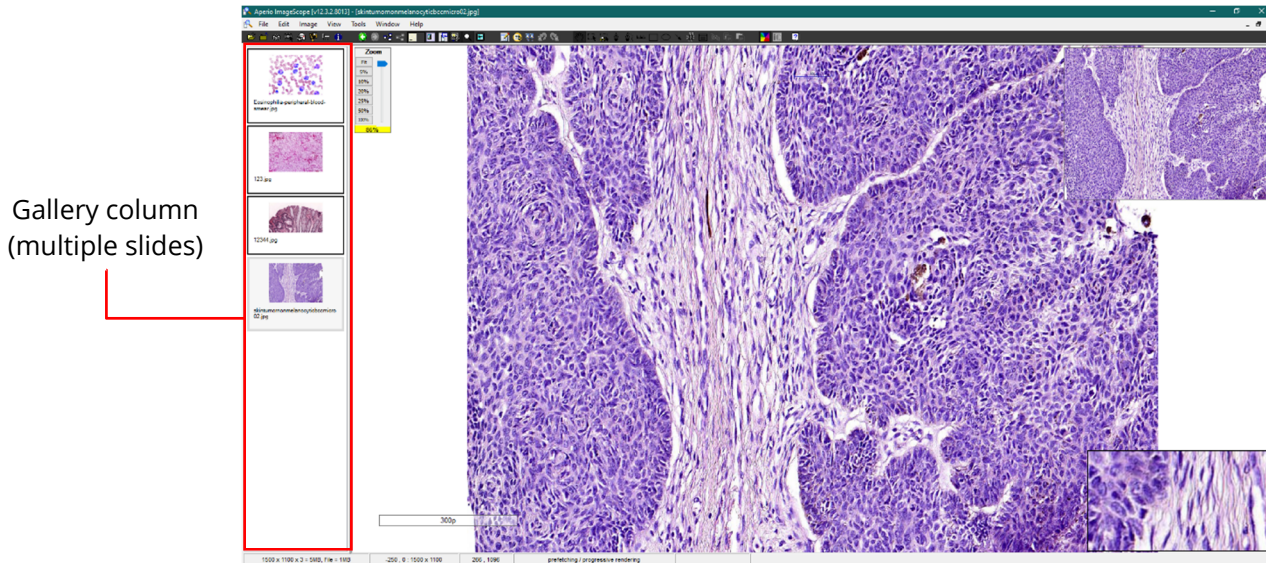


Figure 2: A screenshot of Aperio ImageScope showing the Gallery column.

Zoom functionality

Aperio ImageScope offers a zooming functionality with preset magnification levels of 5%, 10%, 20%, 25%, 50% and 100%. The slider can also be used to zoom in and out by following the steps below.

There are two options to zoom in/out of an image. On the **Magnification Control**:

- Option 1: hold left click on the **magnification slider pointer** and drag it down to zoom in or up to zoom out.

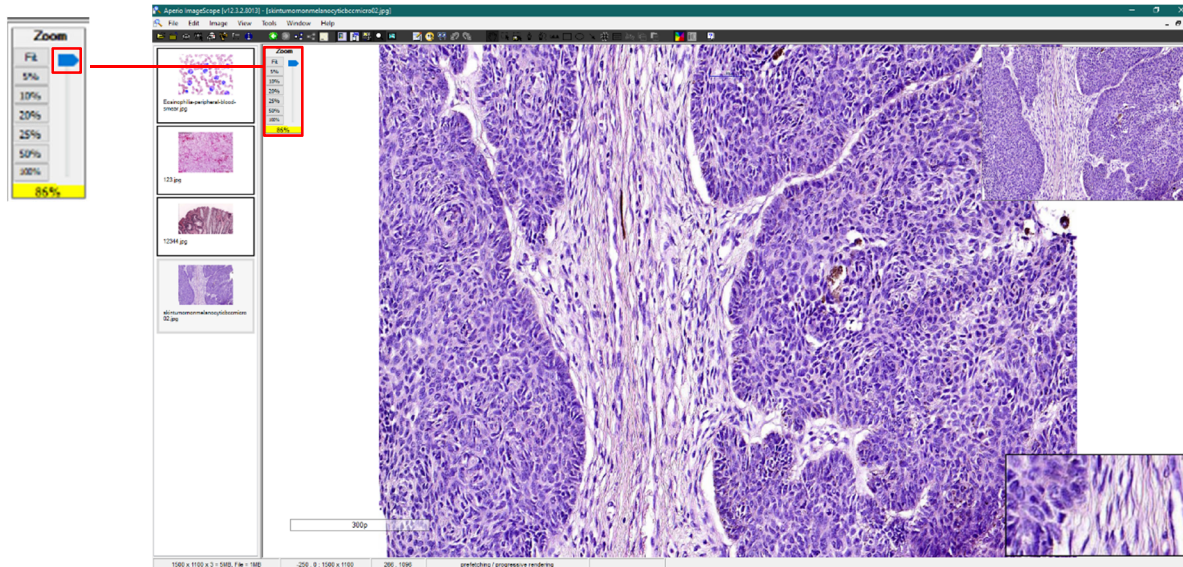


Figure 3: A screenshot of Aperio ImageScope showing the magnification slider.

- Option 2: Click on one of the preset magnification level options available beside the **magnification slider**.

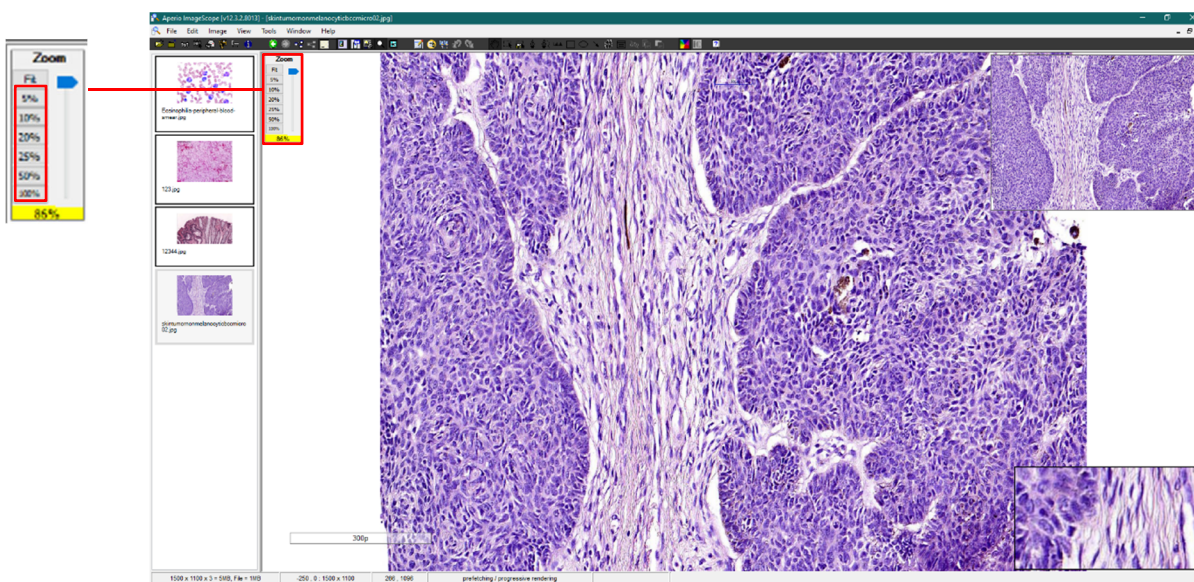


Figure 4: A screenshot of Aperio ImageScope showing the preset magnification options.

Pan functionality (moving across image)

You may wish to view a particular area or side of the image after zooming in. To do so, follow the step(s) below:

- Place the mouse cursor on any area of the image. The cursor will change to an open hand icon.



Figure 5: An open hand cursor icon.

- Hold left click on the mouse. The cursor will change to a closed hand icon.



Figure 6: A closed hand cursor icon.

- While holding left click, drag the mouse in any direction to move the image view area.

Alternatively, you can jump to a specific area directly by clicking on it in the **Quick Pan** window.

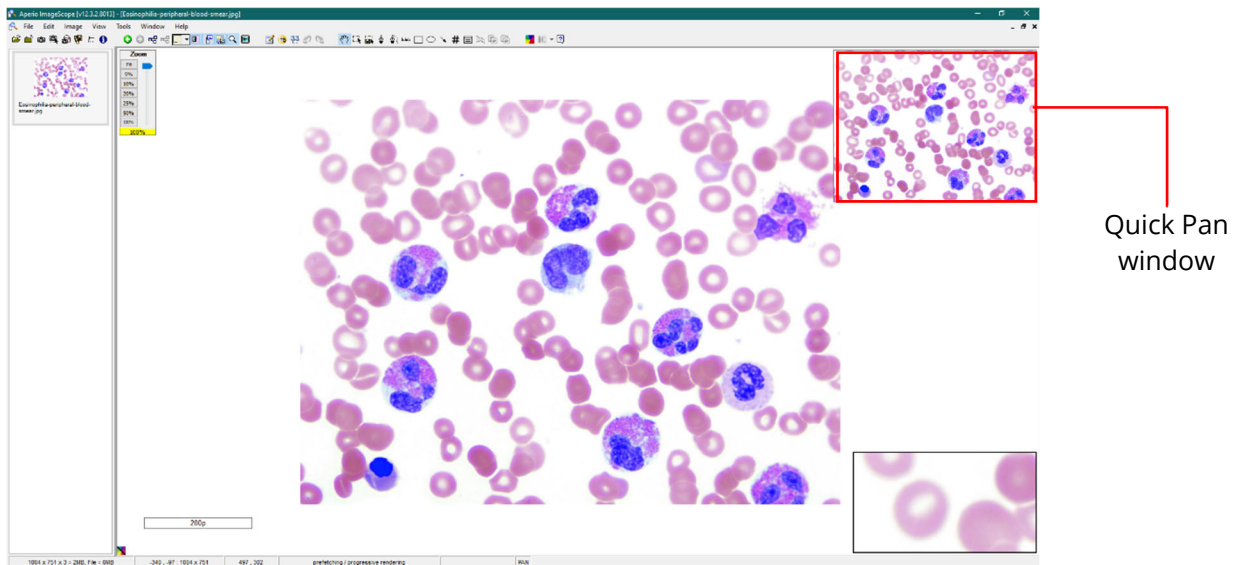


Figure 7: A screenshot of Aperio ImageScope showing the Quick Pan window.